



THE UNIVERSITY OF NEW SOUTH WALES



THE UNIVERSITY OF NEW SOUTH WALES



The Main Gates, seen from Anzac Parade

Historical

The University of New South Wales was incorporated by Act of the New South Wales Parliament in 1949, at a time when there was one university only in each of the capital cities—seven in all.

It has grown rapidly, complementing the State's accelerating industrialization. At the same time the number of universities in Australia has increased to 14 in 1968.

Today it is one of the large Universities in Australia, having a current enrolment of over 14,000. Colleges of the University have been established at Wollongong and Broken Hill. By 1980 the student population is expected to be 25,000.

Undergraduate, graduate, advanced training and research programmes have been closely linked to the needs of industry and commerce, especially in the application of science to these areas.

The University emphasizes the balance of science and the humanities. Thus, all undergraduate students in scientific, technological and engineering disciplines must include in their courses some humanities subjects, while those working for an Arts degree must study at least one scientific subject.



The changing campus skyline, from the Barker Street gates

The Campus

The main campus at Kensington occupies 100 acres, approximately $4\frac{1}{2}$ miles from the heart of the city of Sydney, with a sports area of some fifteen acres nearby.

The first permanent buildings on the Kensington campus were occupied in 1955. The three major engineering schools—civil, electrical, and industrial and mechanical—are located in three adjacent multi-storeyed buildings on the central campus area. These buildings, which are architecturally unified, house some of the most modern laboratories in Australia.

The Faculties

There are ten faculties:

Applied Science

Architecture

Arts

Biological Sciences

Commerce

Engineering

Law (not yet operative)

Medicine

Military Studies

(operated in conjunction with the Royal
Military College, Duntroon, A.C.T.)

Science

Academic staff numbers 800, and part-time academic staff 850. There are fifty-one individual schools teaching at undergraduate level.

Courses in a number of disciplines new to the Australian scene have been introduced, such as Business Administration, Marketing, Nuclear Engineering, Wool Technology, Textile Technology, Fuel Technology, Polymer Science, Structural Engineering, Traffic Engineering and Highway Engineering.



The Commerce Court

Graduate Studies

There has been a tremendous growth in the University in post-graduate study, the number of students at present enrolled at this level being over 2,000. The University offers a considerable range of opportunities leading to the degrees of Doctor and Master, or to graduate diplomas.

THE UNIVERSITY UNION

The Union occupies two buildings, one particularly conspicuous by its unusual round plan and structure.

Designed as a meeting ground and social centre, the Union provides amenities and facilities for the refreshment, entertainment, recreation and convenience of members.

RANDWICK RACECOURSE

INTERNATIONAL HOUSE

International House, with accommodation in the first stage for 120 men and women residents, composed of equal numbers of Australians and students from overseas countries, was opened in June, 1968. Most are post-graduate students.

APPLIED SCIENCE STAGE 1

CHEMISTRY

OLD TOTE THEATRE

PHILIP BAXTER COLLEGE (1966)

GOLDSTEIN COLLEGE (1964)

BASSER COLLEGE (1959)

ELECTRICAL ENGINEERING ARTS/MATHEMATICS

THE CENTRAL LECTURE THEATRE

This complex of eight theatres is one of the central facilities. It is fitted with equipment for slide, overhead film projection as well as television of lectures by television.

ARTS GATE THEATRE COMMERCE

WOOL AND PASTORAL SCIENCES

METALLURGY

ANZAC PARADE

VOCATIONAL STUDIES

ANZAC THEATRE

HIGH STREET

ANZAC GATE

LECTURE ROOMS

UNISEARCH HOUSE

ANGLICAN COLLEGE

OVAL

BARKER STREET

SCIENCE HALL

SCIENCE ROAD

BARKER GATE

TEXTILE TECHNOLOGY

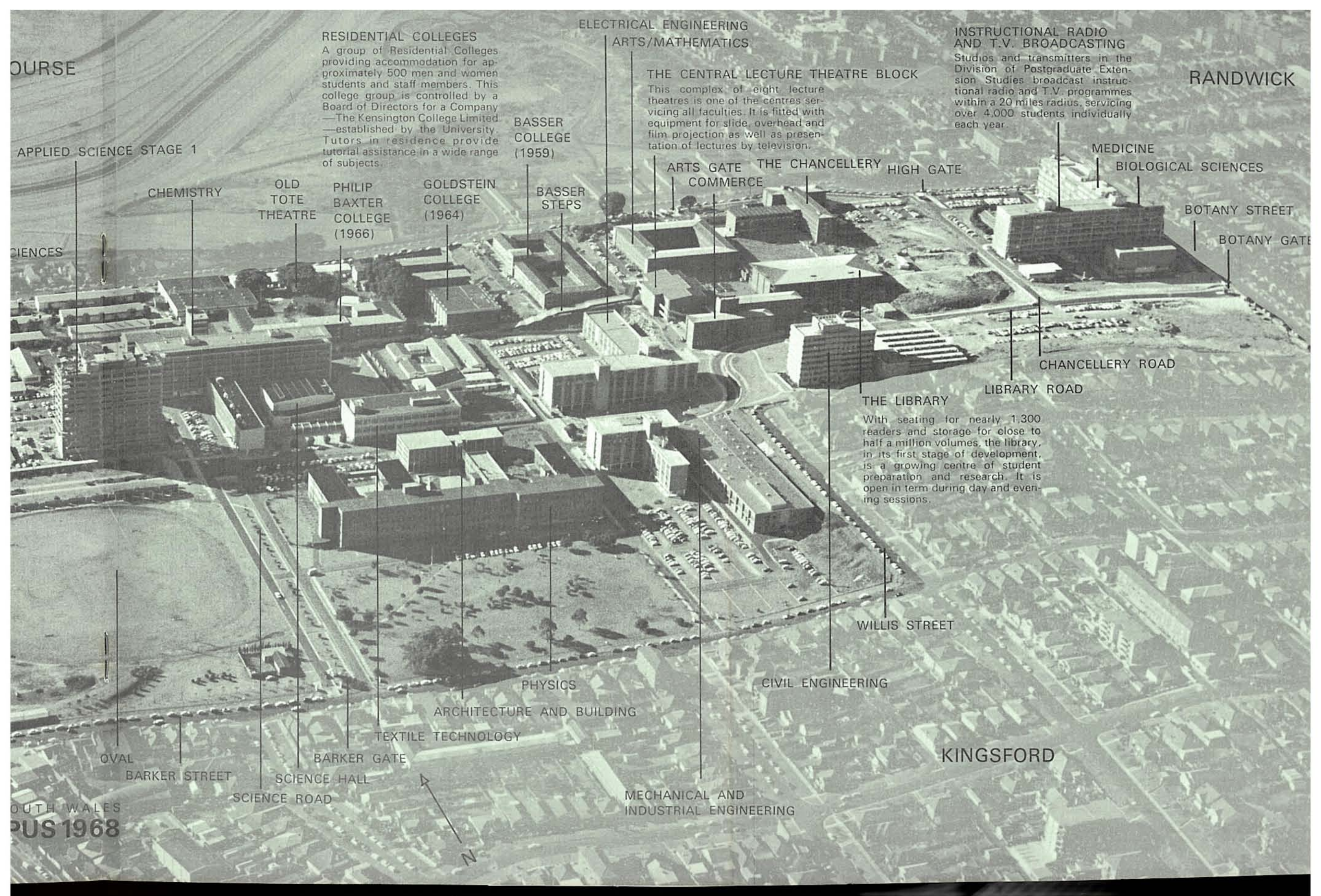
ARCHITECTURE AND BUILDING

PHYSICS

MECHANICAL AND INDUSTRIAL ENGINEERING

THE UNIVERSITY OF NEW SOUTH WALES KENSINGTON CAMPUS 1968





COURSE

RESIDENTIAL COLLEGES

A group of Residential Colleges providing accommodation for approximately 500 men and women students and staff members. This college group is controlled by a Board of Directors for a Company — The Kensington College Limited — established by the University. Tutors in residence provide tutorial assistance in a wide range of subjects.

ELECTRICAL ENGINEERING

ARTS/MATHEMATICS

THE CENTRAL LECTURE THEATRE BLOCK

This complex of eight lecture theatres is one of the centres servicing all faculties. It is fitted with equipment for slide, overhead and film projection as well as presentation of lectures by television.

INSTRUCTIONAL RADIO AND T.V. BROADCASTING

Studios and transmitters in the Division of Postgraduate Extension Studies broadcast instructional radio and T.V. programmes within a 20 miles radius, servicing over 4,000 students individually each year.

RANDWICK

APPLIED SCIENCE STAGE 1

CHEMISTRY

OLD TOTE THEATRE

PHILIP BAXTER COLLEGE (1966)

GOLDSTEIN COLLEGE (1964)

BASSER COLLEGE (1959)

BASSER STEPS

ARTS GATE THE CHANCELLERY COMMERCE

HIGH GATE

MEDICINE

BIOLOGICAL SCIENCES

BOTANY STREET

BOTANY GATE

CHANCELLERY ROAD

LIBRARY ROAD

THE LIBRARY

With seating for nearly 1,300 readers and storage for close to half a million volumes, the library, in its first stage of development, is a growing centre of student preparation and research. It is open in term during day and evening sessions.

WILLIS STREET

CIVIL ENGINEERING

PHYSICS

ARCHITECTURE AND BUILDING

TEXTILE TECHNOLOGY

BARKER GATE

SCIENCE HALL

SCIENCE ROAD

KINGSFORD

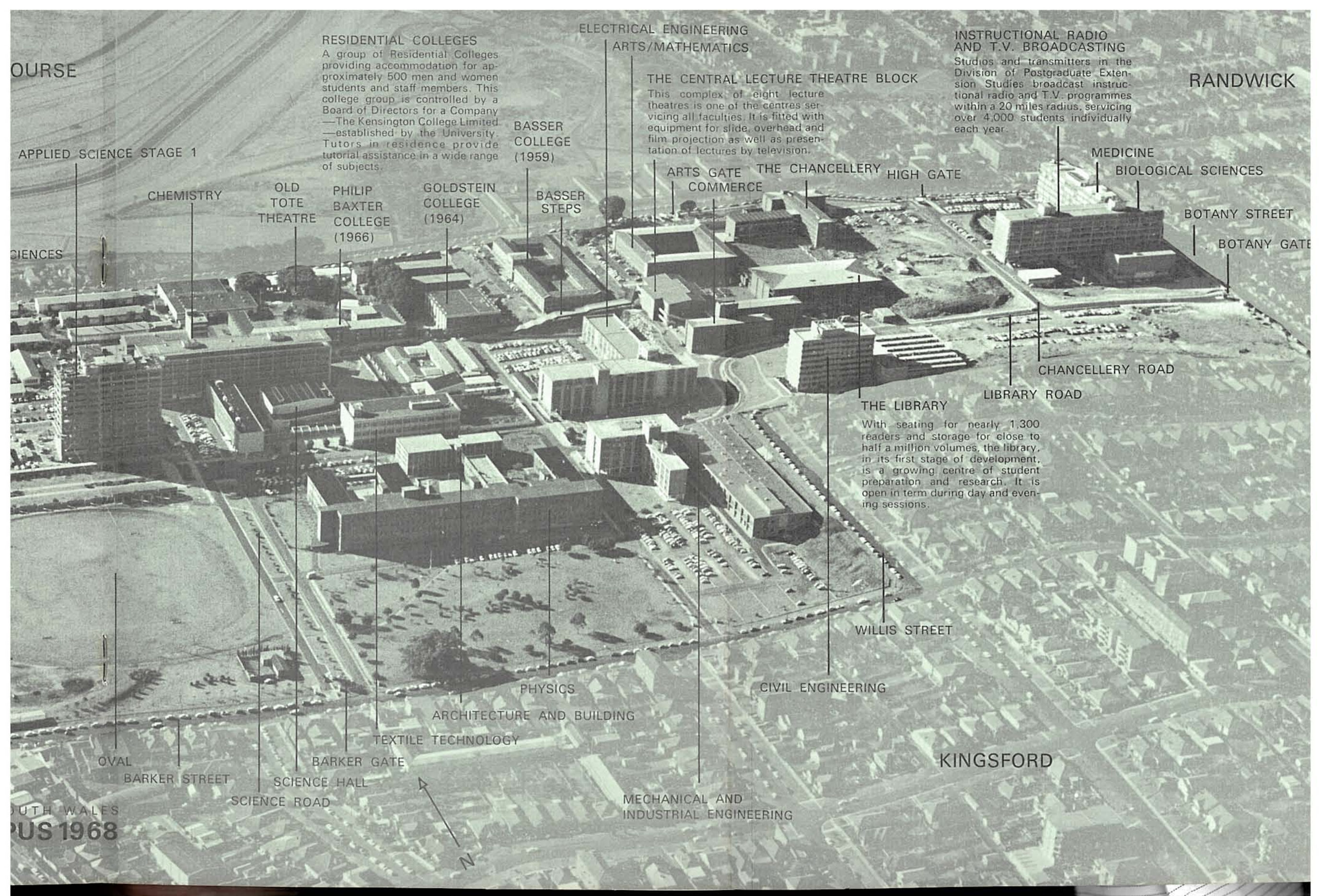
OVAL

BARKER STREET

OUTH WALES
US 1968

MECHANICAL AND INDUSTRIAL ENGINEERING

N



COURSE

RESIDENTIAL COLLEGES
A group of Residential Colleges providing accommodation for approximately 500 men and women students and staff members. This college group is controlled by a Board of Directors for a Company — The Kensington College Limited — established by the University. Tutors in residence provide tutorial assistance in a wide range of subjects.

ELECTRICAL ENGINEERING
ARTS/MATHEMATICS

INSTRUCTIONAL RADIO AND T.V. BROADCASTING
Studios and transmitters in the Division of Postgraduate Extension Studies broadcast instructional radio and T.V. programmes within a 20 miles radius, servicing over 4,000 students individually each year.

RANDWICK

APPLIED SCIENCE STAGE 1

SCIENCES

CHEMISTRY

OLD TOTE THEATRE

PHILIP BAXTER COLLEGE (1966)

GOLDSTEIN COLLEGE (1964)

BASSER COLLEGE (1959)

BASSER STEPS

THE CENTRAL LECTURE THEATRE BLOCK
This complex of eight lecture theatres is one of the centres servicing all faculties. It is fitted with equipment for slide, overhead and film projection as well as presentation of lectures by television.

ARTS GATE COMMERCE

THE CHANCELLERY

HIGH GATE

MEDICINE

BIOLOGICAL SCIENCES

BOTANY STREET

BOTANY GATE

CHANCELLERY ROAD

LIBRARY ROAD

THE LIBRARY
With seating for nearly 1,300 readers and storage for close to half a million volumes, the library, in its first stage of development, is a growing centre of student preparation and research. It is open in term during day and evening sessions.

WILLIS STREET

CIVIL ENGINEERING

KINGSFORD

PHYSICS

ARCHITECTURE AND BUILDING

TEXTILE TECHNOLOGY

BARKER GATE

SCIENCE HALL

SCIENCE ROAD

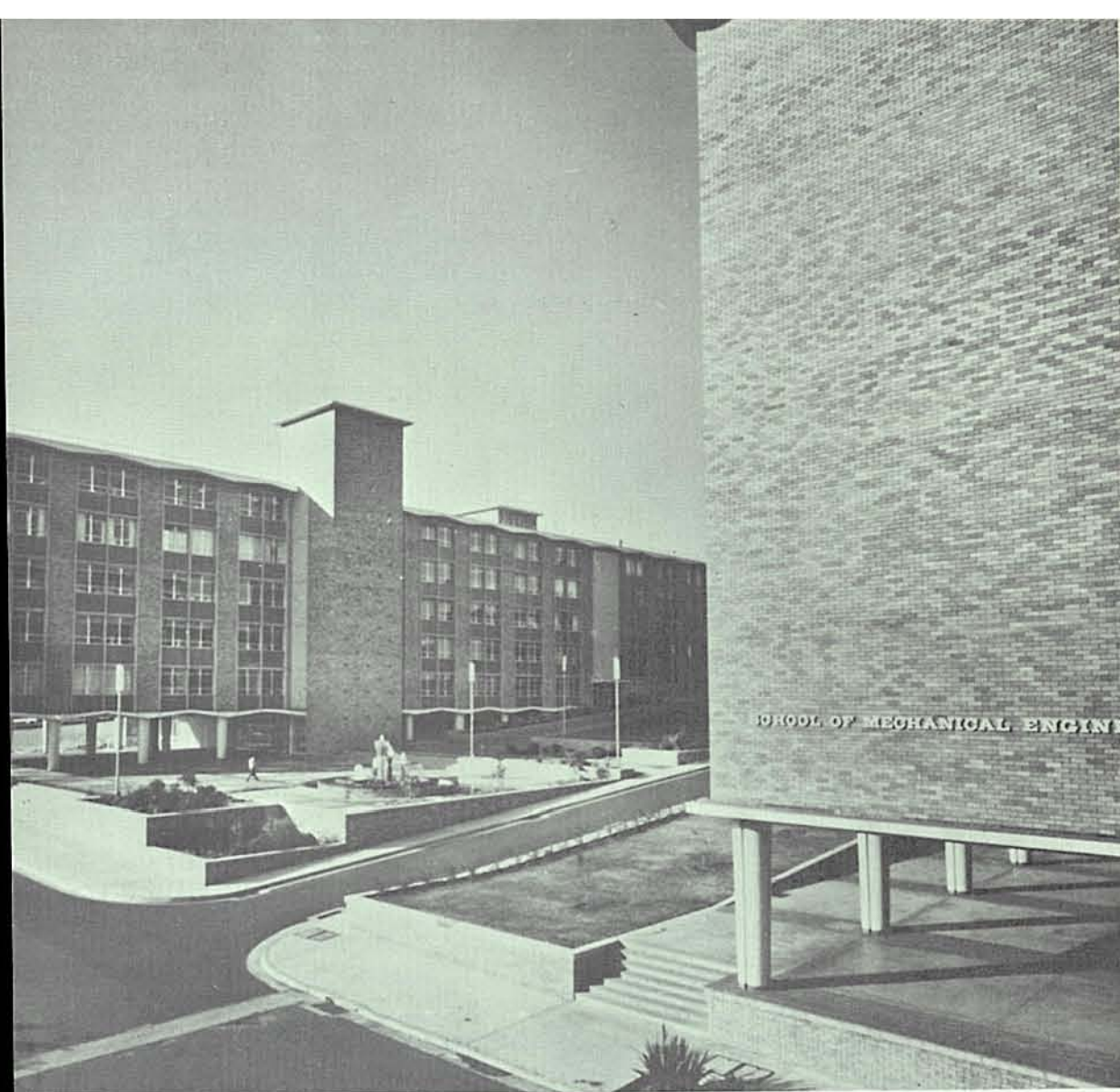
MECHANICAL AND INDUSTRIAL ENGINEERING

OVAL

BARKER STREET

**SOUTH WALES
UNIVERSITY 1968**

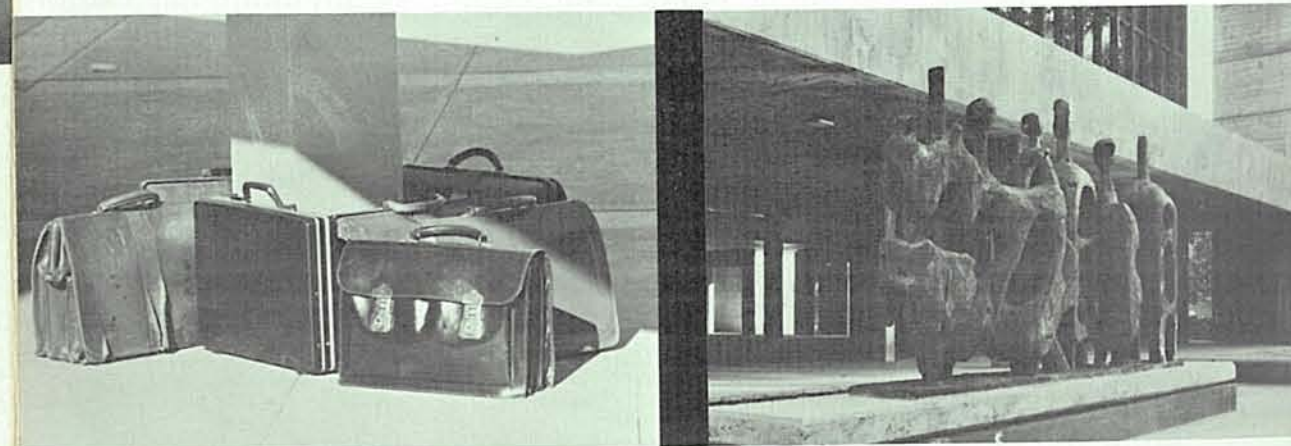




The Engineering Plaza



Wollongong University College

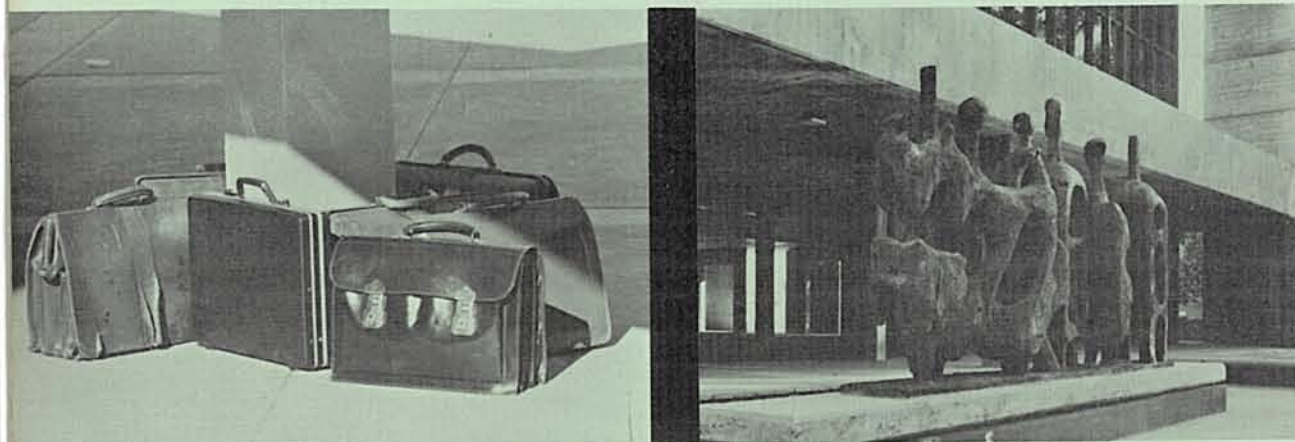


Executive!

Sculpture by Burt Flugelman in the courtyard of the Phillip Goldstein College. This building received the Sulman Award for architectural merit



Wollongong University College



Executive!

Sculpture by Burt Flugelman in the courtyard of the Phillip Goldstein College. This building received the Sulman Award for architectural merit

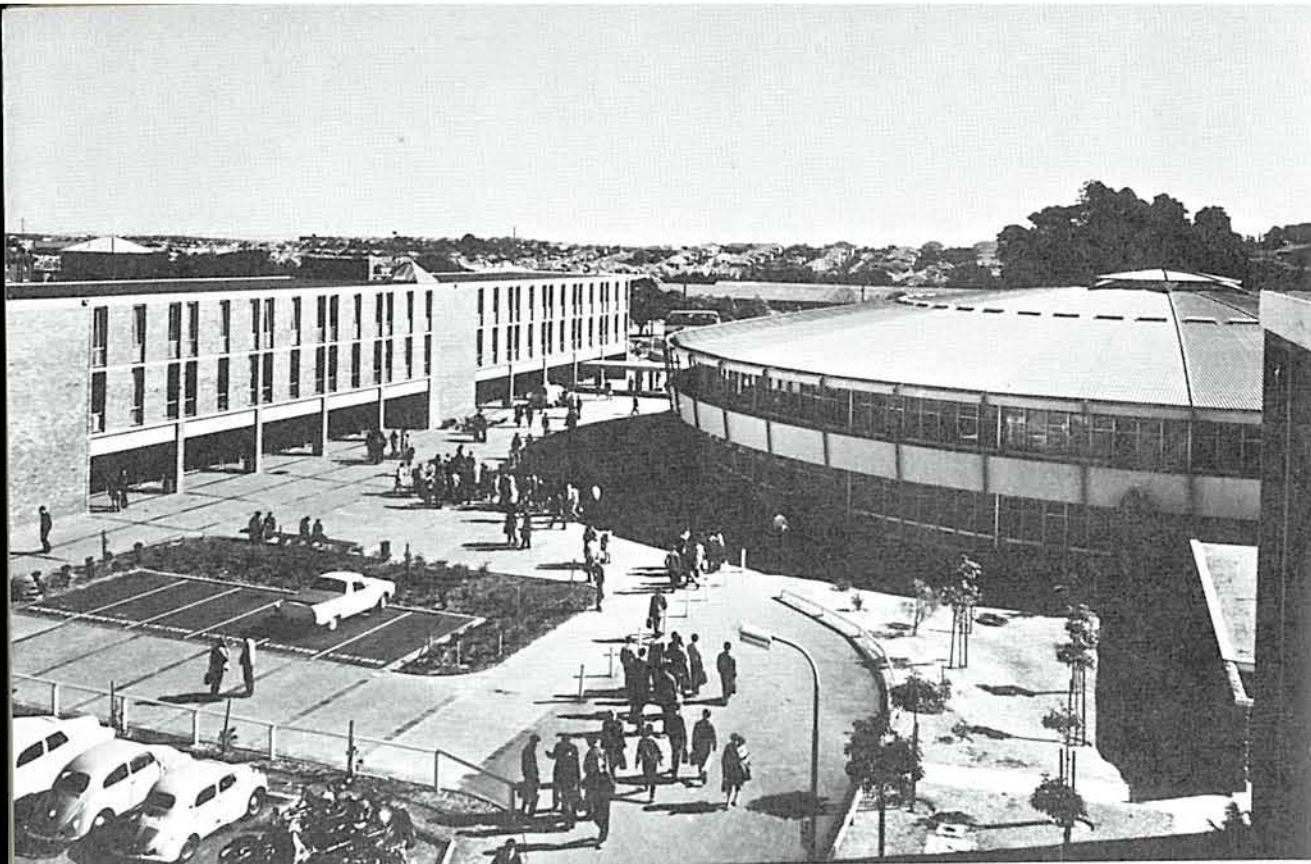
Wollongong University College

Wollongong is the third city of the State located on the coast some 50 miles south of Sydney. It is a rapidly developing industrial centre. The University College, established in 1961, is an integral part of the University and provides courses in five areas of study—Applied Science, Arts, Commerce, Engineering and Science. The current enrolment is nearly 1,000.

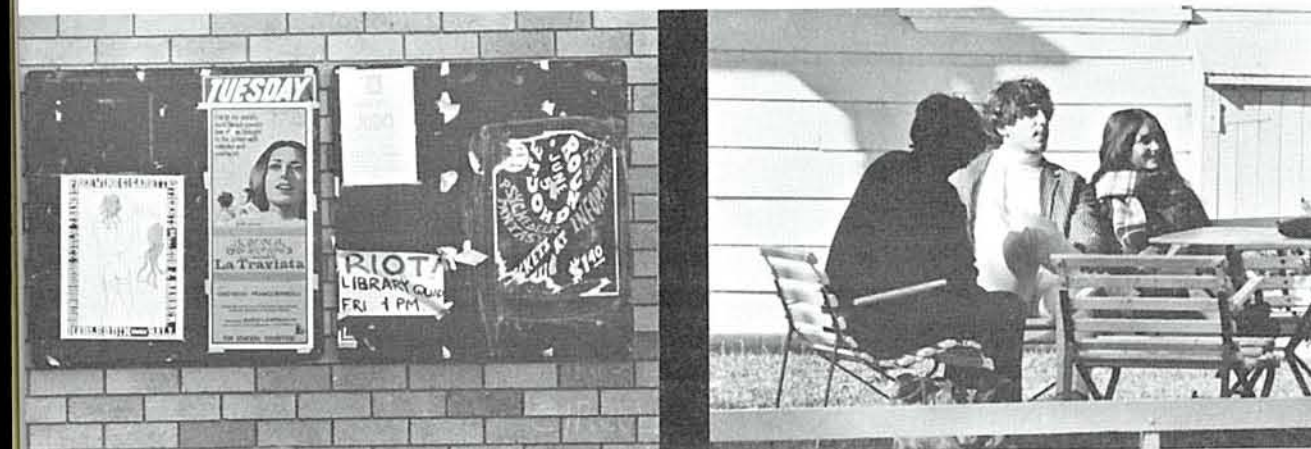
Broken Hill Division

The University also operates a Division at Broken Hill, comprising the W.S. and L.B. Robinson University College and the Fowler's Gap Field Station. The University College, officially opened in 1967, aims to develop teaching and research activities related directly to the mining industry.

The Government of New South Wales in 1966 granted the University an initial 10-year lease over an area named Fowler's Gap, comprising 98,000 acres some 70 miles north of Broken Hill. Several schools of the University are interested in working the property as an arid zone research centre, and there has been enthusiastic support from local graziers in making the venture a self-supporting sheep station.



The Union Complex



Coming events

Lunch hour at the National Institute of Dramatic Art

Unisearch

Unisearch Ltd. was established by the University Council in 1959. It is a company wholly owned and controlled by the University. Its work, consistent with one of the statutory aims of the University, is to assist Australian industry in the solution of its research and development problems and also its day-to-day technical problems.

In its work for industry Unisearch has available to it the services of an extensive panel of members of the University's academic and technical staffs who act as consultants and also the research equipment and facilities in the University's laboratories. No project is undertaken which would adversely affect in any way the University's normal responsibilities for teaching and research.

In 1967 Unisearch carried out 964 investigations for industry. The profits of the company may only be paid to the University.

Student Services

Specialised services have been established to help students cope with the many and varied problems of undergraduate and graduate life. These include a student counselling service, a student health centre, a housing service and a student employment service.

Institutes

In an effort to overcome the difficulties of establishing and developing inter-disciplinary activities, the University has established several institutes. These are the Institute of Administration, the Institute of Highway and Traffic Research, the Institute of Languages, The Institute of Nuclear Engineering and the Institute of Rural Technology.

A common feature of these institutes has been the bringing together of persons from a variety of disciplines to confer and co-operate in fostering teaching and research in some inter-disciplinary fields.

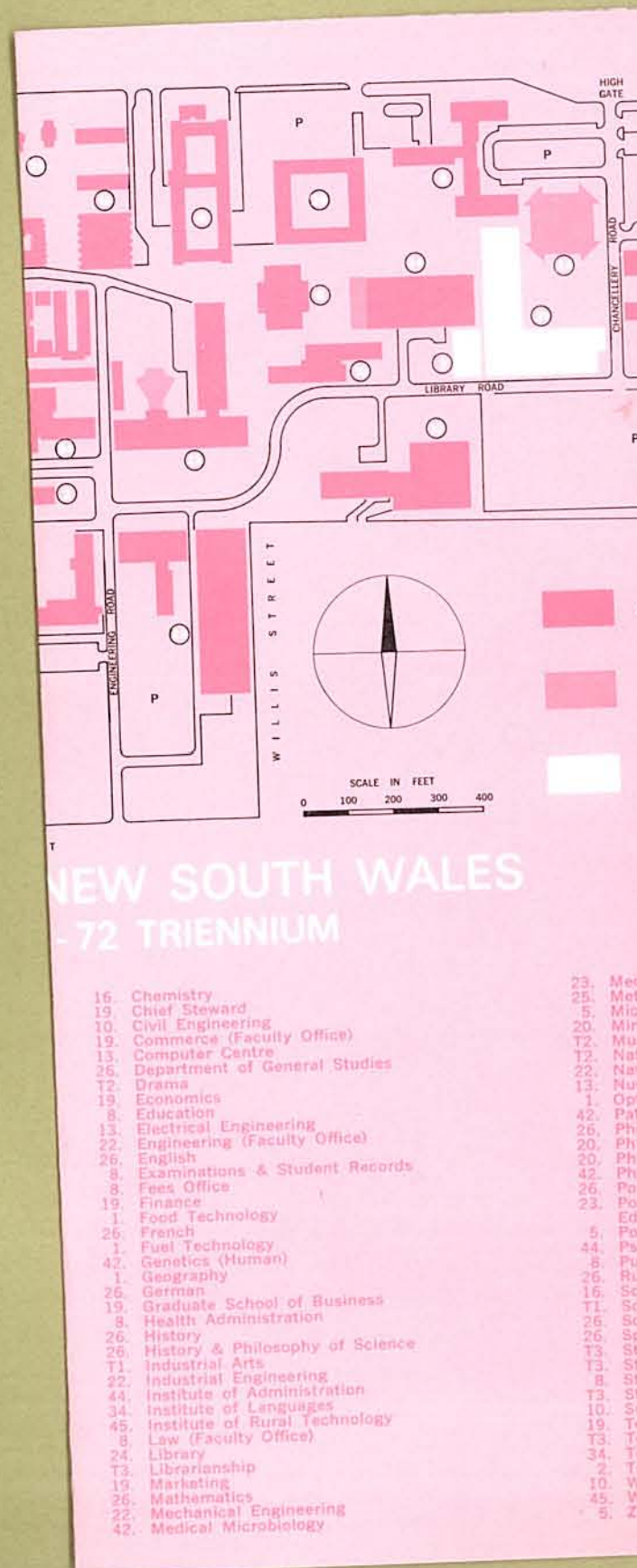
Drama

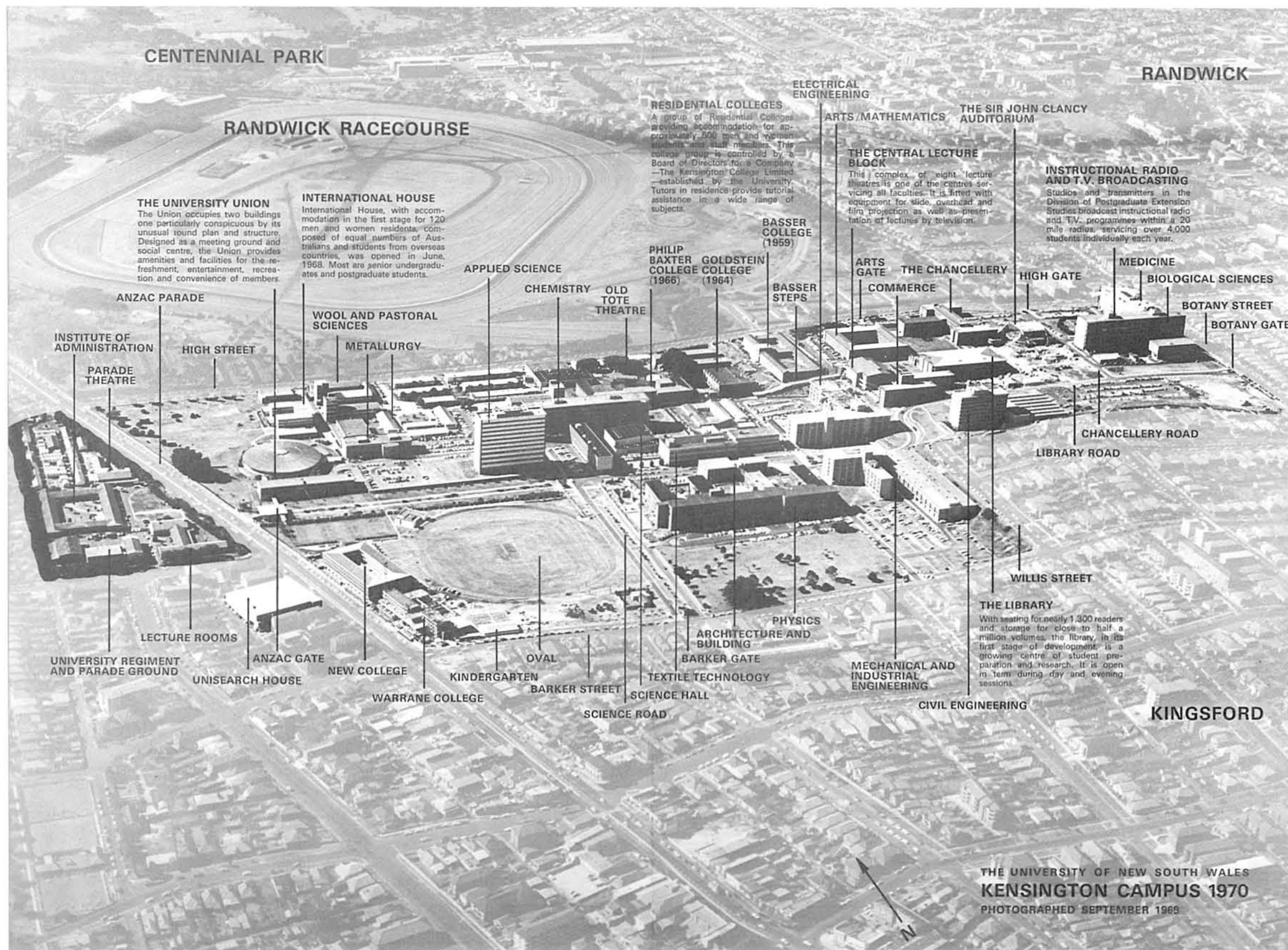
Dramatic activity at the University is considerable, and its scope which includes the practice of professional theatre as well as academic and vocational training, is matched only in a few of the larger American universities.

Within the Faculty of Arts there is a School of Drama which provides courses in critical and historical evaluation of theatre as an optional requirement for the degree of Bachelor of Arts. In addition, the University is the home of the Old Tote Theatre, the Jane Street Experimental Theatre and the National Institute of Dramatic Art—a training school for actors and producers.

Apart from the School of Drama, all these activities are grouped under the University of New South Wales Drama Foundation which was established in 1965 under the auspices of the Council of the University in association with the Australian Elizabethan Theatre Trust. The purpose of the Foundation is to promote and encourage the practice and study of the theatre arts. The Board of Governors is made up of an equal number of members representing the University and the Trust and a Chairman appointed by the University.

Further information may be obtained from:
The Public Information Officer,
The Chancellor,
The University of New South Wales,
P.O. Box 1, KENSINGTON,
N.S.W. 2033
Phone 663 0351.





CENTENNIAL PARK

RANDWICK

RANDWICK RACECOURSE

THE UNIVERSITY UNION

The Union occupies two buildings one particularly conspicuous by its unusual round plan and structure. Designed as a meeting ground and social centre, the Union provides amenities and facilities for the refreshment, entertainment, recreation and convenience of members.

INTERNATIONAL HOUSE

International House, with accommodation in the first stage for 120 men and women residents, composed of equal numbers of Australians and students from overseas countries, was opened in June, 1968. Most are senior undergraduates and postgraduate students.

RESIDENTIAL COLLEGES

A group of Residential Colleges providing accommodation for approximately 800 men and women students and staff members. This college group is controlled by a Board of Directors for a Company — The Kensington College Limited — established by the University. Tutors in residence provide tutorial assistance in a wide range of subjects.

ELECTRICAL
ENGINEERING

ARTS/MATHEMATICS

THE SIR JOHN CLANCY
AUDITORIUM

**THE CENTRAL LECTURE
BLOCK**

This complex of eight lecture theatres is one of the centres servicing all faculties. It is fitted with equipment for slide, overhead and film projection as well as presentation of lectures by television.

**INSTRUCTIONAL RADIO
AND T.V. BROADCASTING**

Studios and transmitters in the Division of Postgraduate Extension Studies broadcast instructional radio and T.V. programmes within a 20 mile radius, servicing over 4,000 students individually each year.

**BASSER
COLLEGE
(1959)**

**PHILIP
BAXTER
COLLEGE
(1966)**

**GOLDSTEIN
COLLEGE
(1964)**

**ARTS
GATE**

**THE CHANCELLERY
COMMERCE**

HIGH GATE

MEDICINE

BIOLOGICAL SCIENCES

BOTANY STREET

BOTANY GATE

CHANCELLERY ROAD

LIBRARY ROAD

WILLIS STREET

THE LIBRARY

With seating for nearly 1,300 readers and storage for close to half a million volumes, the library in its first stage of development is a growing centre of student preparation and research. It is open in term during day and evening sessions.

**MECHANICAL AND
INDUSTRIAL
ENGINEERING**

CIVIL ENGINEERING

KINGSFORD

ANZAC PARADE

**INSTITUTE OF
ADMINISTRATION**

**PARADE
THEATRE**

HIGH STREET

**WOOL AND PASTORAL
SCIENCES**

METALLURGY

APPLIED SCIENCE

CHEMISTRY

**OLD TOTE
THEATRE**

**PHILIP
BAXTER
COLLEGE
(1966)**

**GOLDSTEIN
COLLEGE
(1964)**

**BASSER
STEPS**

**ARTS
GATE**

**THE CHANCELLERY
COMMERCE**

HIGH GATE

MEDICINE

BIOLOGICAL SCIENCES

BOTANY STREET

BOTANY GATE

CHANCELLERY ROAD

LIBRARY ROAD

WILLIS STREET

THE LIBRARY

With seating for nearly 1,300 readers and storage for close to half a million volumes, the library in its first stage of development is a growing centre of student preparation and research. It is open in term during day and evening sessions.

**MECHANICAL AND
INDUSTRIAL
ENGINEERING**

CIVIL ENGINEERING

KINGSFORD

LECTURE ROOMS

**UNIVERSITY REGIMENT
AND PARADE GROUND**

ANZAC GATE

UNISEARCH HOUSE

NEW COLLEGE

KINDERGARTEN

OVAL

BARKER STREET

SCIENCE HALL

SCIENCE ROAD

WARRANE COLLEGE

TEXTILE TECHNOLOGY

BARKER GATE

**ARCHITECTURE AND
BUILDING**

PHYSICS

THE LIBRARY

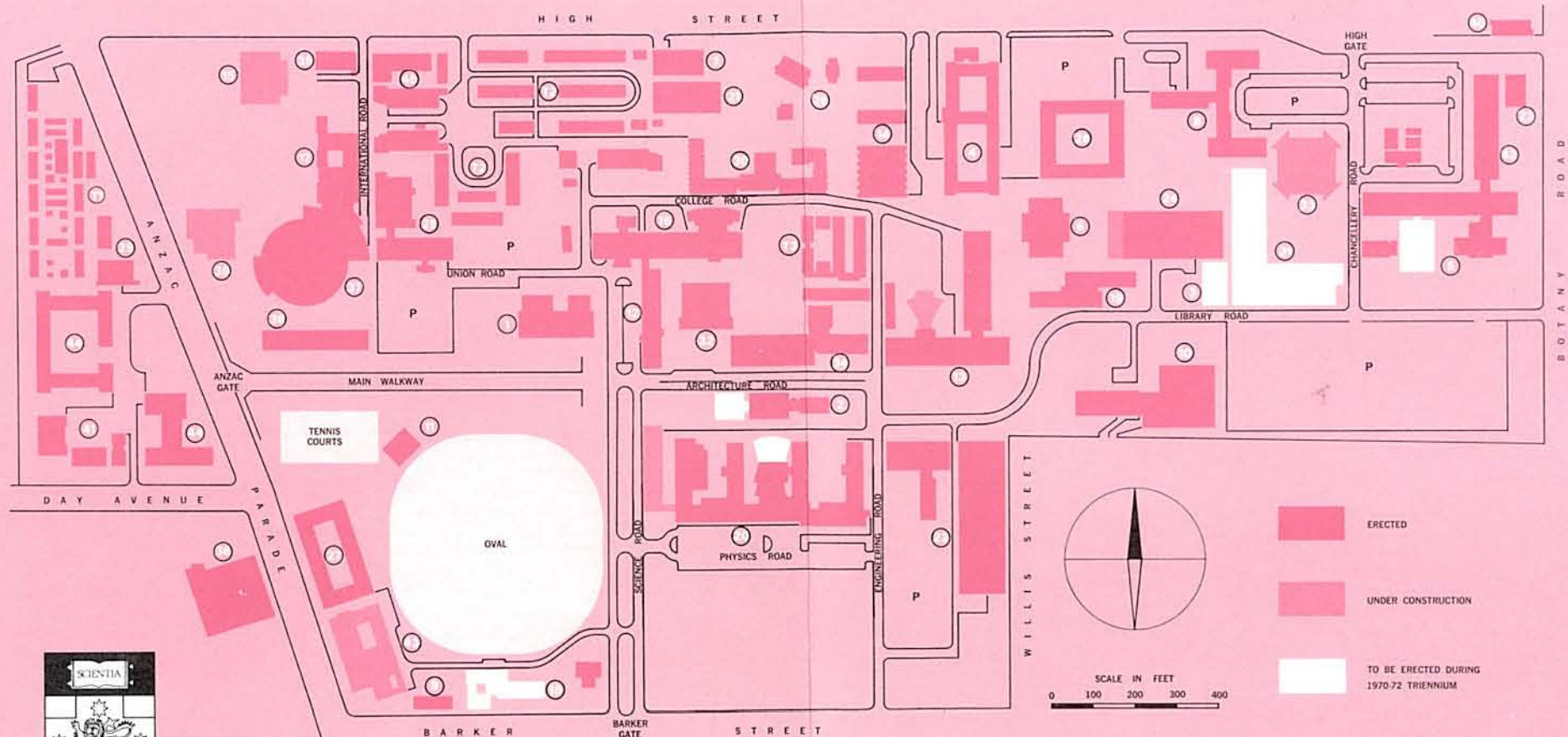
With seating for nearly 1,300 readers and storage for close to half a million volumes, the library in its first stage of development is a growing centre of student preparation and research. It is open in term during day and evening sessions.

**MECHANICAL AND
INDUSTRIAL
ENGINEERING**

CIVIL ENGINEERING

KINGSFORD

THE UNIVERSITY OF NEW SOUTH WALES
KENSINGTON CAMPUS 1970
PHOTOGRAPHED SEPTEMBER 1969



THE UNIVERSITY OF NEW SOUTH WALES KENSINGTON CAMPUS 1970 - 72 TRIENNium

BUILDINGS

1. Applied Science
2. Architecture
3. Banks
4. Basser College
5. Biological Sciences
6. Central Lecture Block
7. Central Store
8. Chancellery
9. Child Minding Centre
10. Civil Engineering
11. Cracknell Sports Pavilion
12. Dalton (Chemistry)
13. Electrical Engineering
14. Goldstein College
15. Physical Education
16. Robert Heffron (Chemistry)
17. International House
18. Jewish College
19. John Goodsell (Commerce)
20. Main Building
21. Maintenance Workshop
22. Mechanical Engineering
23. Medicine (Administration)
24. Menzies Library
25. Metallurgy
26. Morven Brown (Arts/Maths)
27. New College (Anglican)
28. Old Tote Theatre
29. Parade Theatre
30. Philip Baxter College
31. Science Building
32. Science Theatre
33. Sir John Clancy Auditorium
34. Sir Robert Webster (Textiles)

35. Squash Courts
36. Unisearch House
37. Union—Stage I (Roundhouse)
38. Union—Stage II (Blockhouse)
39. Union—Stage III
40. Union—Subsidiary (Golf House)
41. University Regiment
42. Wallace Wirth School of Medicine
43. Warrane College (Roman Catholic)
44. Western Campus
45. Wool and Pastoral Sciences

TEMPORARY BUILDINGS

T1, T2, T3

GENERAL

19. Accountancy
8. Admissions Office
22. Aeronautical Engineering
42. Anatomy
1. Applied Geology
20. Applied Physics
44. Applied Psychology
34. Applied Science (Faculty Office)
8. Appointments Office
2. Architecture (including Faculty Office)
26. Arts (Faculty Office)
5. Biochemistry
5. Biological Sciences (Faculty Office)
5. Biological Technology
5. Botany
13. Bookshop
- T2. Ceramic Engineering
1. Chemical Engineering
1. Chemical Technology

16. Chemistry
19. Chief Steward
10. Civil Engineering
19. Commerce (Faculty Office)
13. Computer Centre
26. Department of General Studies
- T2. Drama
19. Economics
8. Education
13. Electrical Engineering
22. Engineering (Faculty Office)
26. English
8. Examinations & Student Records
8. Fees Office
19. Finance
1. Food Technology
26. French
1. Fuel Technology
42. Genetics (Human)
1. Geography
26. German
19. Graduate School of Business
8. Health Administration
26. History
26. History & Philosophy of Science
- T1. Industrial Arts
22. Industrial Engineering
44. Institute of Administration
34. Institute of Languages
45. Institute of Rural Technology
8. Law (Faculty Office)
24. Library
- T3. Librarianship
19. Marketing
26. Mathematics
22. Mechanical Engineering
42. Medical Microbiology

23. Medicine (Faculty Office)
25. Metallurgy
5. Microbiology
20. Mining Engineering
- T2. Music
- T2. National Institute of Dramatic Art
22. Naval Architecture
13. Nuclear Engineering
1. Optometry
42. Pathology
26. Philosophy
20. Physics
20. Physics (Applied)
42. Physiology
26. Political Science
23. Postgraduate Committee in Medical Education
5. Postgraduate Extension Studies
44. Psychology (Applied)
8. Public Information
26. Russian
16. Science (Faculty Office)
- T1. Social Work
26. Sociology
26. Spanish
- T3. Student Amenities Office
- T3. Student Counselling Unit
8. Student Employment
- T3. Student Health Service
10. Surveying
19. Television Centre
- T3. Tertiary Education Research Centre
34. Textile Technology
2. Town Planning
10. Water Research Foundation
45. Wool & Pastoral Sciences
5. Zoology